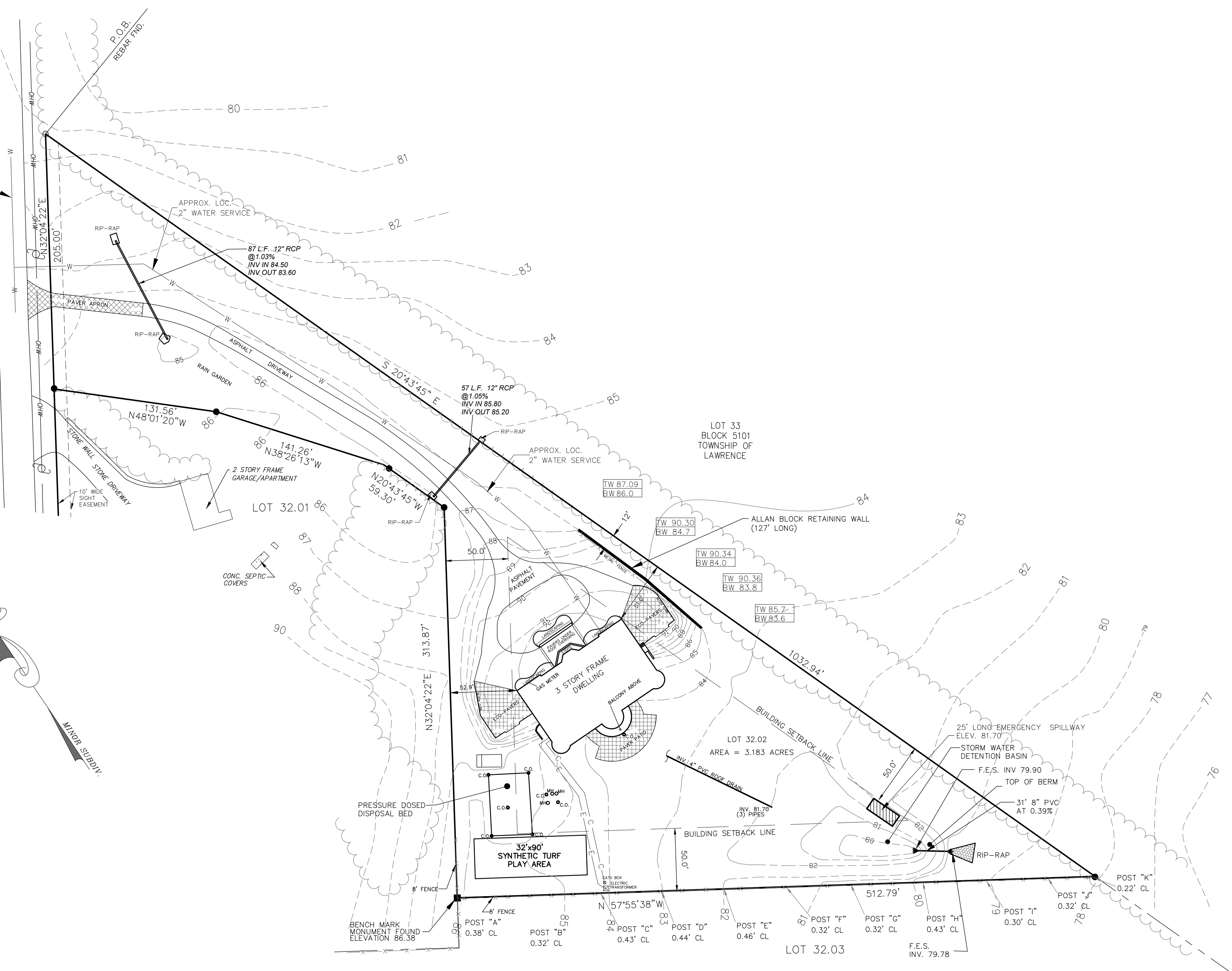
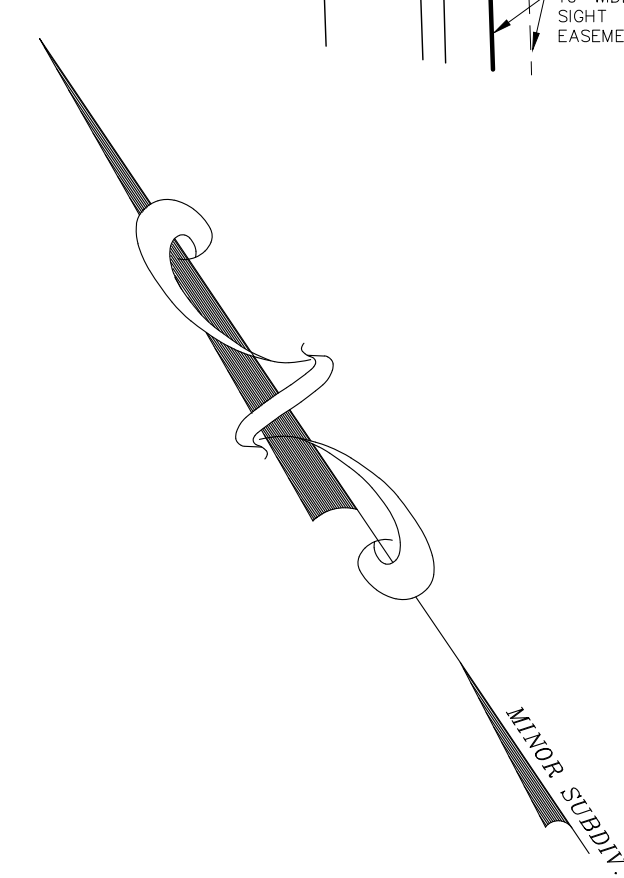


FLACKER ROAD

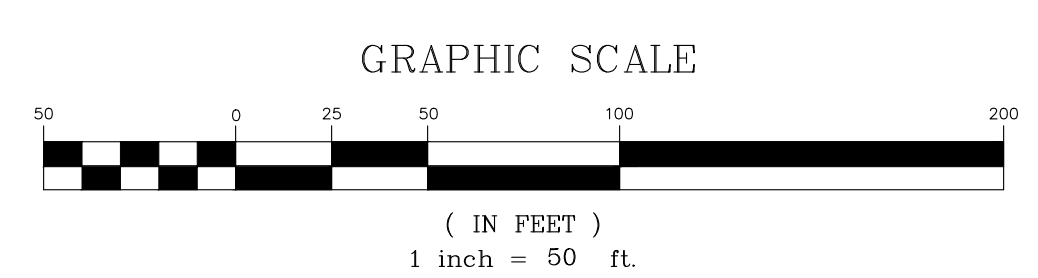
PRINCETON PIKE
(66' WIDE R.O.W. - PER TAX MAP)



LEGEND:

- P.O.B. POINT OF BEGINNING
- R.O.W. RIGHT OF WAY
- F.E.S. FLARED END SECTION
- ELEV. ELEVATION
- CONC. CONCRETE
- APPROX. LOC. APPROXIMATE LOCATION
- IRON PINS SET
- MONUMENT SET
- OHW OVERHEAD WIRES
- UTILITY POLE
- MANHOLE
- CLEAN-OUT
- BB SURFACE GRADE ELEVATION
- SS SPOT GRADE ELEVATION
- CONTOUR ELEVATION
- FLOW ARROW
- E ELECTRIC LINE
- C CABLE LINE
- W WATER LINE
- TW TOP WALL ELEVATION
- BW BOTTOM WALL ELEVATION
- TREE/WOODS LINE
- X—X FENCE LINE

- PROPERTY BEING KNOWN AND DESIGNATED AS LOT 32.02 IN BLOCK 5101 AS SHOWN ON THE LAWRENCE TOWNSHIP TAX MAP, MERCER COUNTY, NEW JERSEY. TAX MAP SHEET NUMBERS 51.06 & 51.08.
- REFERENCE MAP: "LOT 32 BLOCK 5101, TOWNSHIP OF LAWRENCE, MERCER COUNTY, NEW JERSEY - MINOR SUBDIVISION", AS PREPARED BY CREST ENGINEERING ASSOCIATES, INC., DATED 9/15/03 AND LAST REVISED ON 4/14/04.



LAWRENCE TOWNSHIP TAX MAP
SHEET NOS. 51.06 & 51.08

NO	DESCRIPTION	DATE	D/P
2.	ADD SYNTHETIC TURF PLAY AREA & 8' FENCE	2/5/21	
1.	UPDATE/REVISE GRADING	8/31/16	DPH

CREST
Engineering Associates Inc.
Civil & Environmental Engineers
Professional Planners • Surveyors • Landscape Architects
• CERTIFICATE OF AUTHORIZATION NO. 24GA27989300 •

100 RIKE DRIVE
MILLSTONE TOWNSHIP, N.J. 08535
PH: (609) 448-3550

12 ROGERS PIKE
AT WATER STREET
TOWNSHIP, N.J. 08753
PH: (732) 244-0888

DANIEL P. HUNDLEY
PROFESSIONAL LAND SURVEYOR N.J. LICENSE NO. 33174

DATE	8/10/16
SCALE	1"=50'
DRAWN	DPH
CHECKED	
SHEET	1 of 1
POCKET	
65	

**LOT 32.02
BLOCK 5101**
(3870 PRINCETON PIKE)
TOWNSHIP OF LAWRENCE
MERCER COUNTY, NEW JERSEY

**AS-BUILT
TOPOGRAPHIC
SURVEY**

FILE N: 4456
DATE: 8/10/16
SCALE: 1"=50'
DRAWN: DPH
CHECKED: []
SHEET: 1 of 1
POCKET: []
65